

Building Metropolitan areas as political actors

**Christian LEFEVRE, Professor,
University Paris-Est, LATTS**

**Die Städte im Föderalismus der Zukunft,
Zurich, january 15, 2010**

Globalization and metropolitan areas: Political spaces as political constructs

- Globalization does not automatically create metropolitan areas as political actors
- Making metropolitan areas as political actors is a political process
- It is a conflicting process because it changes the spaces of power and raises issues and challenges of legitimacy, power and autonomy

Experiences and 'models' of the building of metropolitan areas as political spaces

❑ Experiences in Europe are not that many and not that successful

❑ The 3 'models':

- The Strong institutional model (France and Italy)
- The soft institutional model (London)
- The 'Governance Model (Barcelona, Paris and Turin)

The Strong institutional model: France and Italy

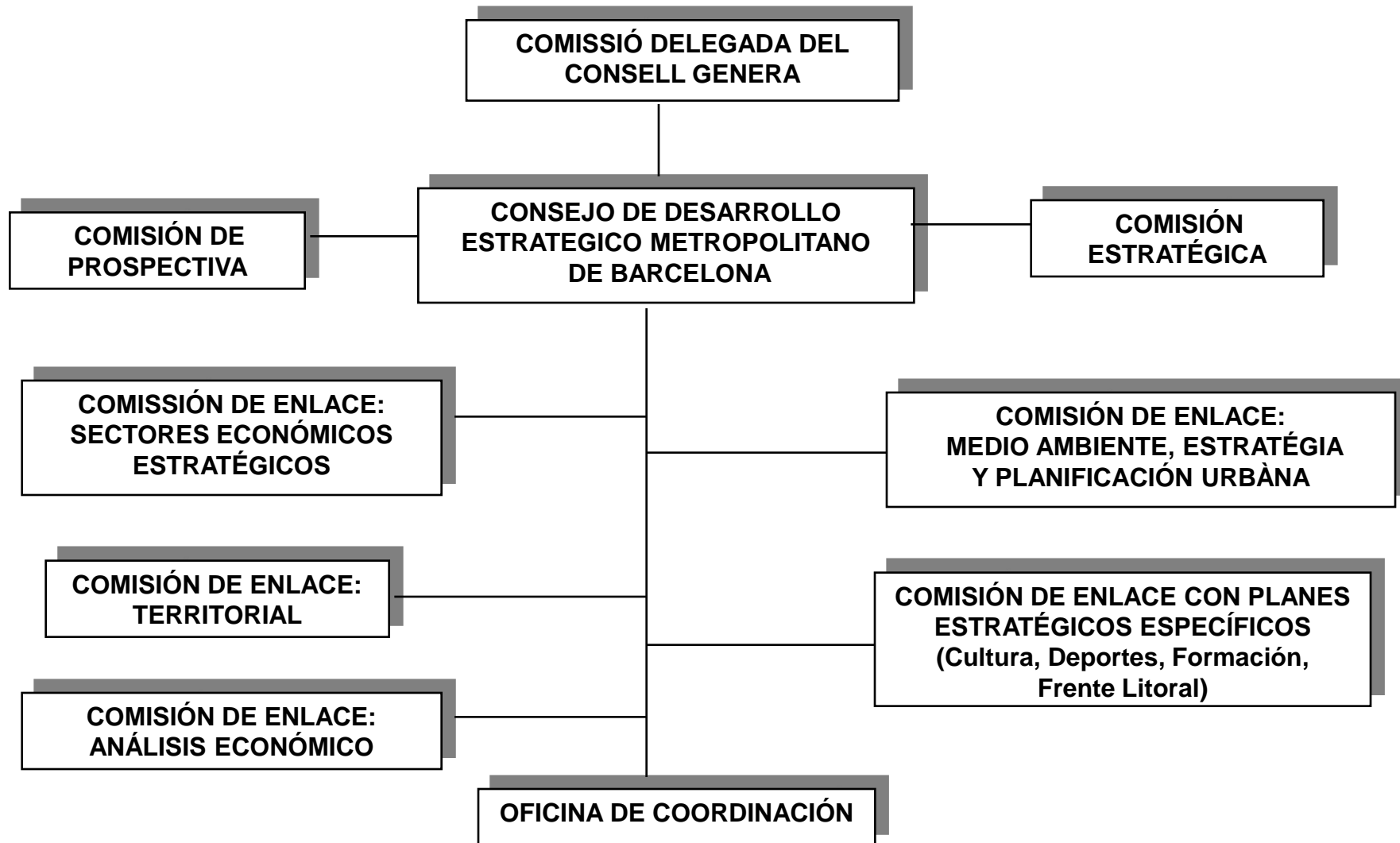
- ❑ Institutions as central element of the building process of a metropolitan political actor
- ❑ These institutions are strong
 - strong legitimacy (State and democratic election)
 - important responsibilities
 - significant resources
- ❑ They are top-down imposed on local actors
- ❑ Two examples in Europe:
 - France: 'Communautés Urbaines' (1966) and 'Métropoles' (2010)
 - Italy: 'Metropolitan Cities' established in 1990
- ❑ Results:
 - France: apparent success but questions about the
 - relevance of the areas covered by the institution (e.g. Lyon)
 - effectivity of metropolitan policies and strategies

The Governance Model: Barcelona and Turin

- ❑ The objective is to create a metropolitan collective actor
- ❑ Institution building may or may not be the final 'governance' output
- ❑ The focus is on the process (generally bottom up)
- ❑ Strategic planning is often the form taken by this process
- ❑ Two examples in Europe: Barcelona and Turin
 - Sophisticated organization (example of Barcelona)
 - very open system of actors (local authorities, business, civil society)
 - Central role of the political player (central city)

- ❑ Results
 - Difficult to assess
 - Some success: international positive visibility, urban regeneration and new economic development but
 - generally focused on the central city
 - problem of legitimacy of the metropolitan scale

The organization of Strategic planning in Barcelona



The Soft institutional model: The case of London (1)

- The Greater London Authority (GLA): a strategic authority
- A weak institution but a Strong leadership
- Political legitimacy given to Business by the State

The Soft institutional model: The case of London (2)

The construction of an Urban Political Regime with the Business sector

❑ Constructing an urban political regime with the Business sector

- 2000: Creation of the London Business Board (LCCI, CBI-London and London First)
- Regular meetings between the Mayor, the LBB and the City Corporation
- The London Development Agency is dominated by the Business sector
- Think London, an inward agency controlled by the Business sector
- 2008: *Election of Boris Johnson*
- 2008: Development of relations between the GLA and the FSB
- 2009: The FSB join the LBB
- 2009: Creation of the London Business Advisory Council

❑ The results: Pro-growth competitive strategies and policies

- A shared vision: London as a World City
- Economic competitiveness/attractiveness as the political priority
- Economic and Urban development of London

The Soft institutional model: The case of London (3)

What can we learn?

- Importance of political leadership
- Importance of the structuring of non political actors (Business)
- Importance of the support of the State
- Importance of the local political culture (relationships between the political and economic actors)
- A strong structuring of actors at the GLA level but fragmentation in the South East

London territories: The GLA in the Greater South East



- Central London
- Inner London
- Outer London

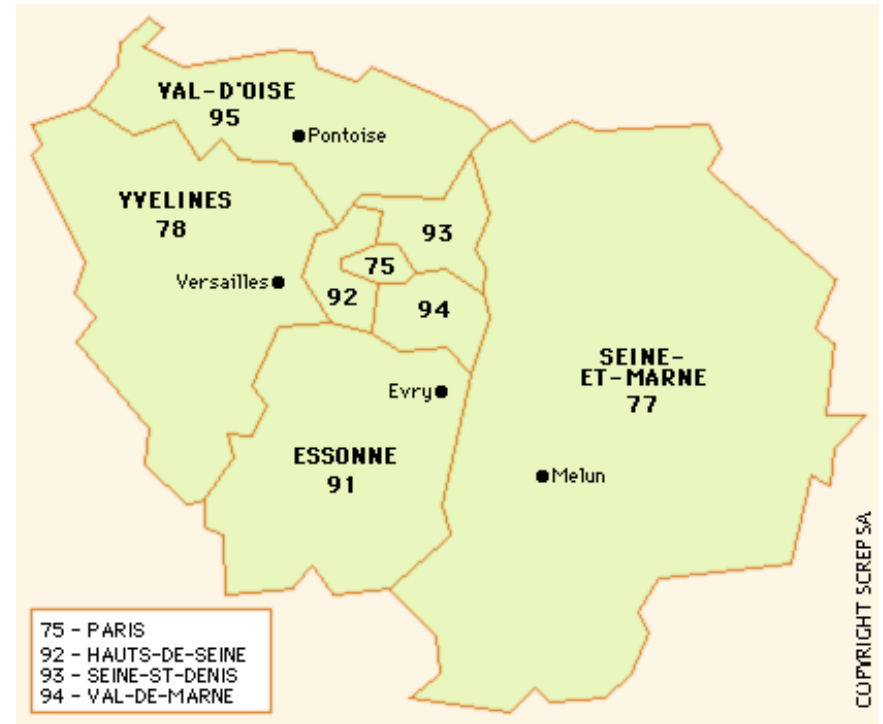
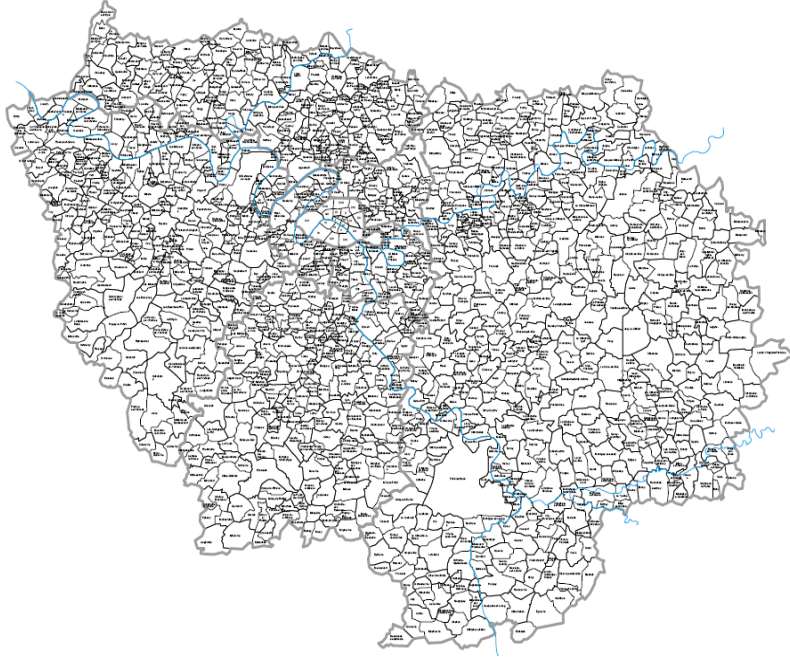


Paris: the experience of the Metropolitan Conference and the new joint authority (Paris-Métropole)

- A very fragmented institutional territory
- A strong central city and a weak regional council
- A strong State
- An 'unfinished' and contested Decentralization process
- A new Mayor (in 2001) and a new mission: cooperation with adjacent local authorities

Paris-Ile de France territories

CARTE ADMINISTRATIVE DE LA REGION ILE-DE-FRANCE



Paris: the experience of the Metropolitan Conference and the new joint authority (Paris-Métropole): The process

- **July 2006:** First meeting of the Metropolitan Conference: Rules are defined
- **November 2006-December 2006:** Various meetings on transport problems
- **July 2007:** Meeting about housing
- **September 2007:** Meeting about Economic development and employment
- **December 2007:** Last meeting on the Governance of the Metropolis
- **March 2008:** *Municipal elections*
- **June 2008:** General Congress of the Metropolis: decision to create a joint authority
- **October 2008:** Meeting of the Metropolitan Conference to discuss the status of this joint authority
- **November 2008:** Status is approved
- **June 2009:** Creation of the joint Authority 'Paris-Métropole'.
- **Since June 2009:** adhesion process

Paris: the experience of the Metropolitan Conference and the new joint authority (Paris-Métropole): Rules of the game

□ The Metropolitan Conference

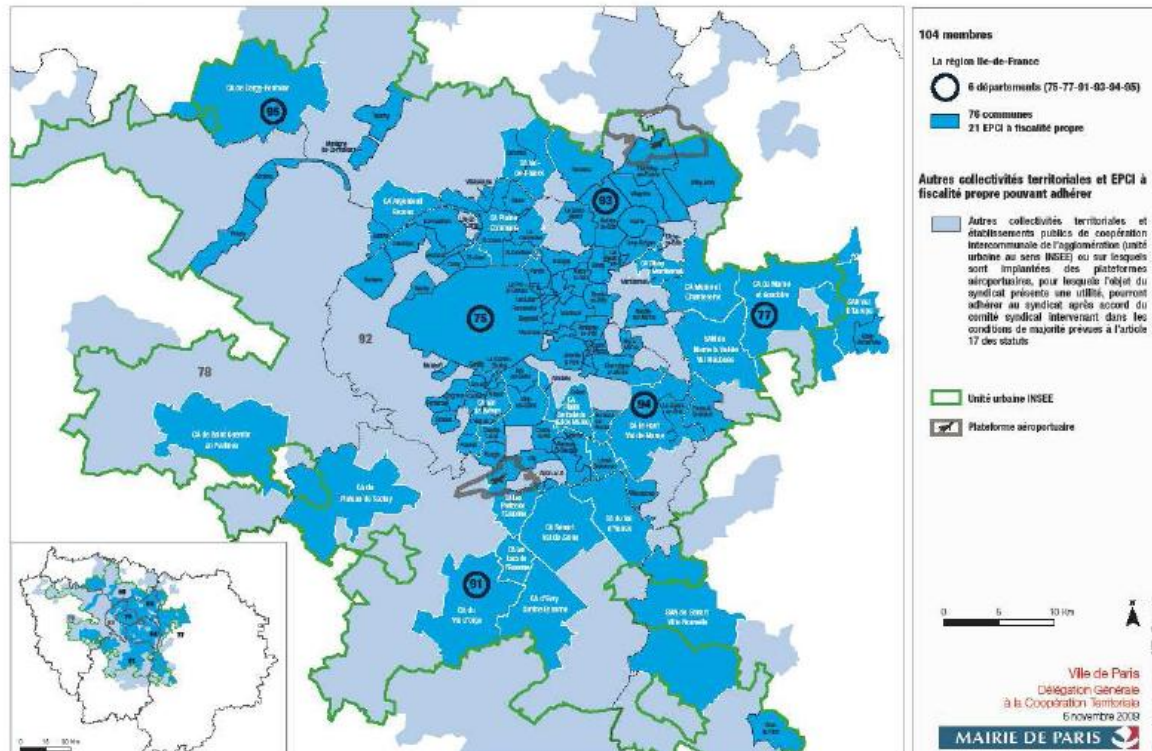
- A voluntary conference gathering mayors and executives of local authorities (municipalities, counties, region and joint authorities)
- Equality between elected executives: one local authority, one vote
- It is a forum, not a decisional place
- Consensus on the topics and issues addressed
- No president but a monitoring group
- Meetings will be located in various municipalities (not always in Paris)

□ Paris-Métropole

- A voluntary joint authority
- Equality between members (one local authority, one vote)
- The Mayor of Paris is not the President (not a legal rule but a political rule)
- The purpose of the authority is to develop studies and reflections on the metropolis
- Creation within the authority of a committee of partners (business sectors, civil society)

2009, création de *Paris Métropole* 1 collectivité = 1 élu

Paris Métropole : 104 collectivités territoriales et EPCI membres à l'issue de la 4^{ème} séance plénière du 6 novembre 2009



Results so far

- Too soon to assess but
- A historical process of dialogue and cooperation
- A slow but progressing building of trust

BUT...

- The opposition of the State with the 'Grand Paris Project'
- The opposition/resistance of the Region
- The 'unwillingness' of conservative local authorities
- A process limited to political institutions

Paris: the experience of the Metropolitan Conference and the new joint authority (Paris-Métropole): What can we learn?

- Importance of leadership
- Importance of time
- Importance of a structured process
- Questioning about the timing of institutionalization (from Metropolitan conference to Paris-Métropole)

Conclusions

❑ The contingency of the process

- National and local political culture
- Nature of the State: Strong, weak, interventionist, respectful
- Local political history

❑ Some key elements of 'success'

- Political Leadership
- The Political structuring of actors
- The importance of a structured process
- Support of the State